

Product application guide

Products: inkjet Direct Sublimation-Flock Transfer Paper

Code: HTF-300 Direct Subli-Flock

Application: Recommended with all Sublimation Inkjet printers for dark or light 100%cotton T-shirts

Specifications: A4 (210mm X 297mm) - 100 sheets / bag, A3 (297mm X 420mm) - 100 sheets / bag
A(8.5"X11")- 20 sheets/bag, B(11"X17") - 20 sheets/bag,
42cm X30M / roll, other specifications are required.

Ink Compatibility: Normal sublimation ink

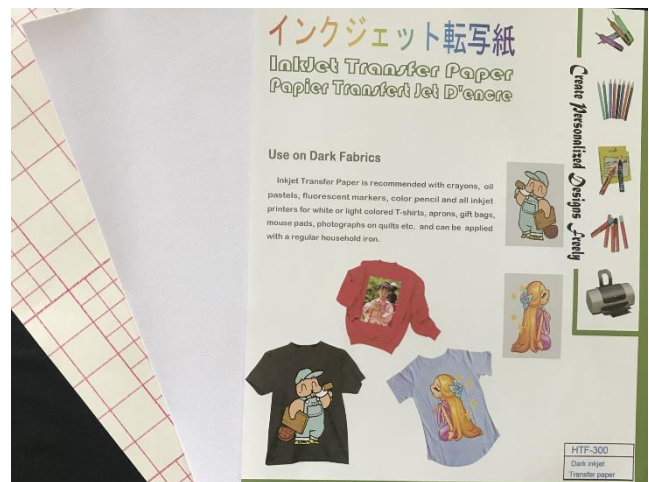


1. Description

Direct Subli-Flock Transfer Paper Printed by Epson L 805 with sublimation ink, or other kinds of inkjet printers with sublimation ink, and then Cutting by desk vinyl cutting plotter, such as Cricut, Cameo4, Panda mini cutter, Brother ScanNcut, etc. if you will use the Silhouette CAMEO4 , the cutter Length of tip:9, and pressure :15 and then transferred onto dark or light colored 100% cotton fabric, cotton/polyester blend, 100%polyester, cotton/spandex blend, etc. by heat press machine, mini heat press, or by home iron-on. Decorate fabric with photos in minutes. After transferring, get great durability with image retaining color, wash-after-wash.

2. Advantage

- Bright colors and washable.
- Flocking surface texture.
- Directly to print sublimation-flock, and transferred a variety of fabrics, such as 100% cotton, polyester-cotton blends
- Transferred by heat press machine, mini heat press or home iron.
- Cutting by desk cutting plotter Cricut, Cameo4, Panda mini cutter, Brother ScanNcut



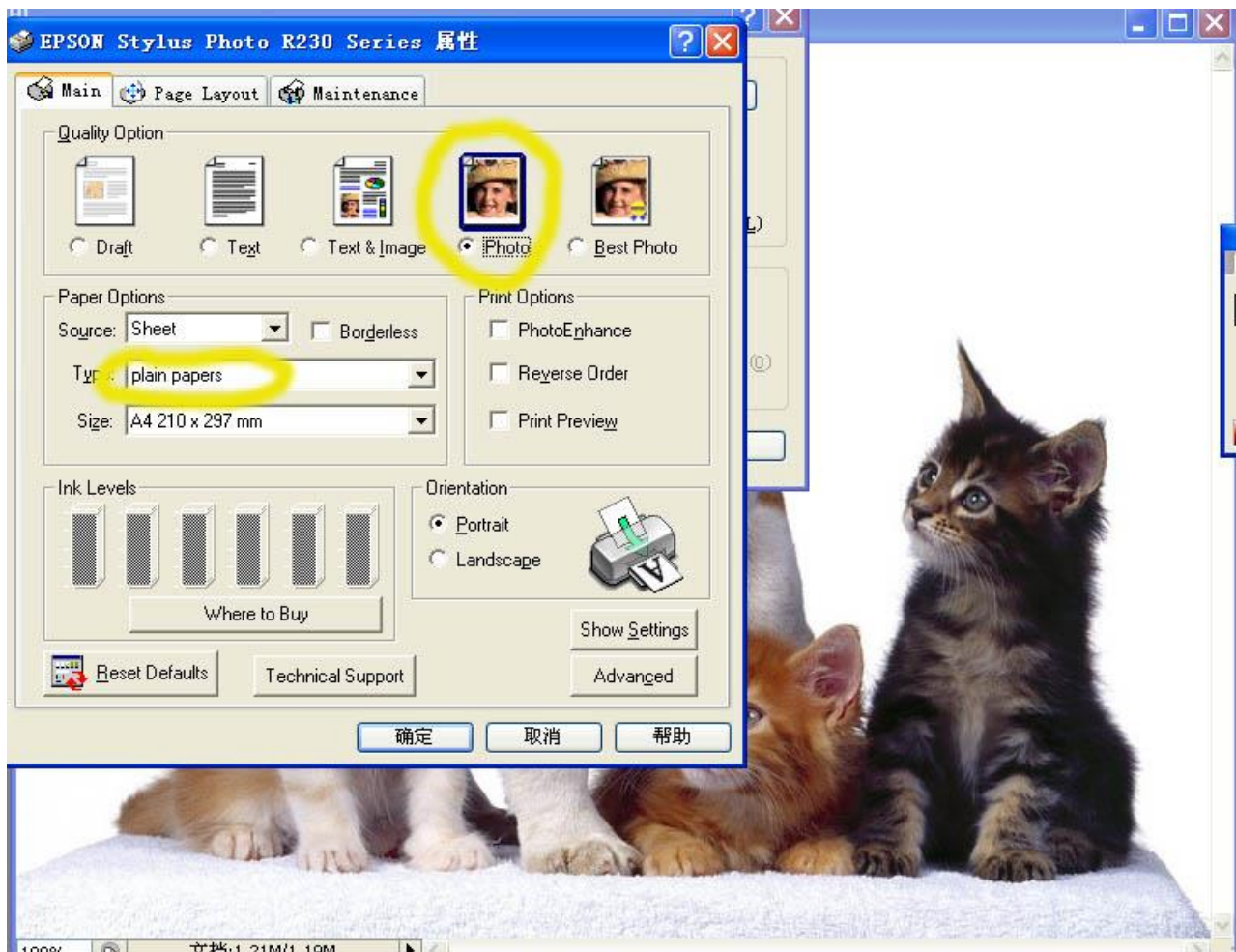
3. Printer Recommendations

It can be printed by all kinds of inkjet printers such as: Epson Stylus Photo 1390, R270, R230, PRO 4400, Canon PIXMA ip4300, 5300, 4200, i9950, ix5000, Pro9500, HP Deskjet 1280, HP Photosmart D7168, HP Officejet Pro K550 etc. and most of color laser copy printers with flat feed and flat output, such as: OKI data C941dn, Konica Minolta C221 C458, Xerox AltaLink C8070, Fuji Film apeos print c5570 etc.



4. Printing setting

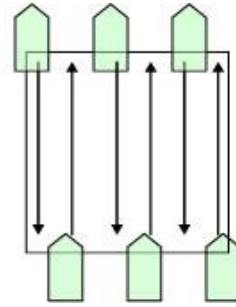
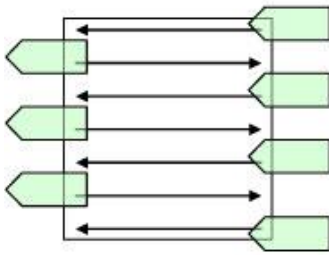
Quality Option: photo(P), Paper Options: Plain papers. and the printing inks are ordinary water-based dye, pigment ink or sublimation ink.



5. Transferred by a regular household iron

- a. Prepare a stable, heat-resistant surface suitable for ironing on.
- b. Preheat the iron to the wool setting. Do not use the steam function
- c. Briefly iron the fabric to ensure that it is completely smooth
- d. Put transfer paper into inkjet printer for printing with coated side up, after drying for several minutes.
- e. The printed image will be cut off with a cutting tool, and the white side of the image will be kept at about 0.5cm to prevent the ink from seeping and staining the clothes.
- f. Peel the image line off from the backing paper gently by hand, place the image line face upwards on the target fabric, then cover a greaseproof paper on the surface of the image, finally, cover a layer of cotton fabric onto the greaseproof paper. Now, you can iron the cotton fabric thoroughly from left to right and up to down.
- g. When moving the iron, less pressure should be given. Don't forget the corners and edges
- h. Continue ironing until you have completely traced the sides of the image. This entire process should take about 60-70 seconds for an 8"x 10" image surface
- i. After ironing, move away cotton fabric, then cooling for about several minutes, Peel the grease proof paper starting at the corner

j. It is possible to use the same grease proof paper five times or more, if there are no residual inks, please keep the grease proof paper, Maybe, you will use it next time.



6. Transferred by heat press machine

- 1). Setting a heat press at 165~175°C for 25~35 seconds using moderate pressure.
- 2). Briefly heat the fabric for 5 seconds to ensure that it is completely smooth.
- 3). Leave the printed image to dry for approx.5 minutes, cut out the motif without leaving a margin around the edges. Peel the image line off from the backing paper gently by hand.
- 4). Place the image line facing upwards onto the target fabric
- 5). Place the grease proof paper onto it.
- 6). Place the cotton fabric onto it.
- 7). After transferring for 25 seconds, move away cotton fabric, then cooling for about several minutes, Peel the grease proof paper starting at the corner.

7. Washing Instructions:

Wash inside out in COLD WATER. **DO NOT USE BLEACH.** Place into the dryer or do hang to dry immediately. Please do not stretch the image transferred or the T-shirt as this may cause cracking to occur, if cracking or wrinkling does occur, please place a sheet of greasy proof paper over the transfer and heat press or iron for a few seconds making sure to press firmly over the entire transfer again. Please remember not to iron directly on the image surface.

8. Finishing Recommendations

Material Handling & Storage: conditions of 35-65% Relative Humidity and at a temperature of 10-30°C. Storage of open packages: When an open packages of media is not being used remove the roll or sheets from the printer cover the roll or sheets with a plastic bag to protect it from contaminants, if you are storing it on end, use an end plug and tape down the edge to prevent damage to the edge of the roll do not lay sharp or heavy objects on unprotected rolls and do not stack them.